

Activity sheet

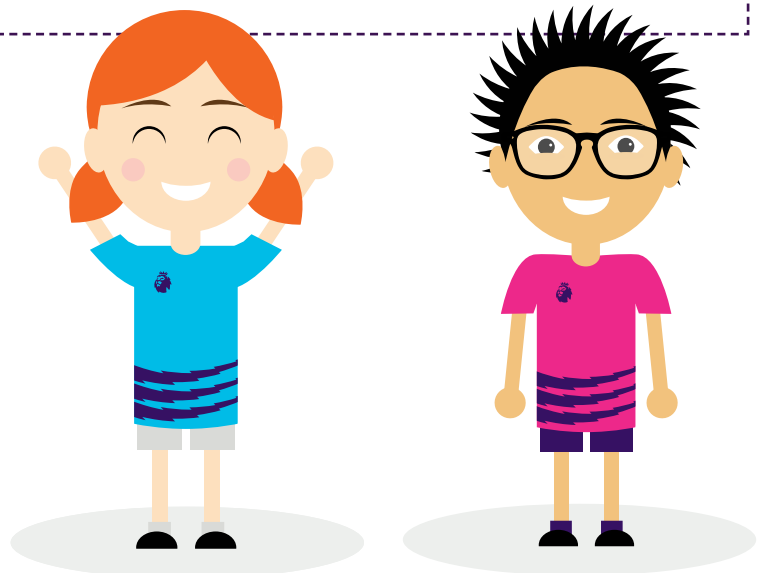
True or false?

Can you use the internet to work out which of the statements below are true? If they are false, what is the correct fact?

Below are some things to consider when doing the activity.

Searching success – how to get reliable information

- **Try to be really specific** about what you are searching for to get accurate results.
- There are two types of search result: those that are automated (produced by your search engine) and those that are sponsored. ‘Sponsored results’ or ‘ads’ are there because a company has paid for them to appear so that they can publicise their product or service.
- Selecting a UK-only search will mean results are likely to be from UK sites following UK law.
- **Check your spelling** when searching as even a small mistake can return different results.
- When finding information on social media platforms, **verify the information** that you find by checking another source too.
- **Make sure a trusted adult is nearby** in case you find anything you are worried about.
- Given a choice, **pick a website that looks official** over something you have never heard of.
- If something you find online seems too good to be true, weird, or doesn’t make sense, it may be unreliable! There are often clues when we can’t trust something online, so **stay alert** and look closely to see if things match up.



Activity sheet
True or false?

Statement	True or false?	Source	If false, what is the correct fact?
The first Premier League goal was scored by Brian Deane in 1992.			
Between 1992, when the Premier League formed and 2020, 5 clubs have always been in the League: Arsenal, Chelsea, Everton, Liverpool and Manchester United.			
The Premier League logo features a tiger with a crown on.			
The highest attendance in a single Premier League game was 83,222 in 2018 (Arsenal v Tottenham Hotspur).			
The Premier League trophy weighs 35 kg in total.			

Activity sheet

True or false?

Time to reflect

How easy was it to find out whether these statements were true or false?

Circle the emojis – one that it was really difficult and four means it was really easy.



1



2

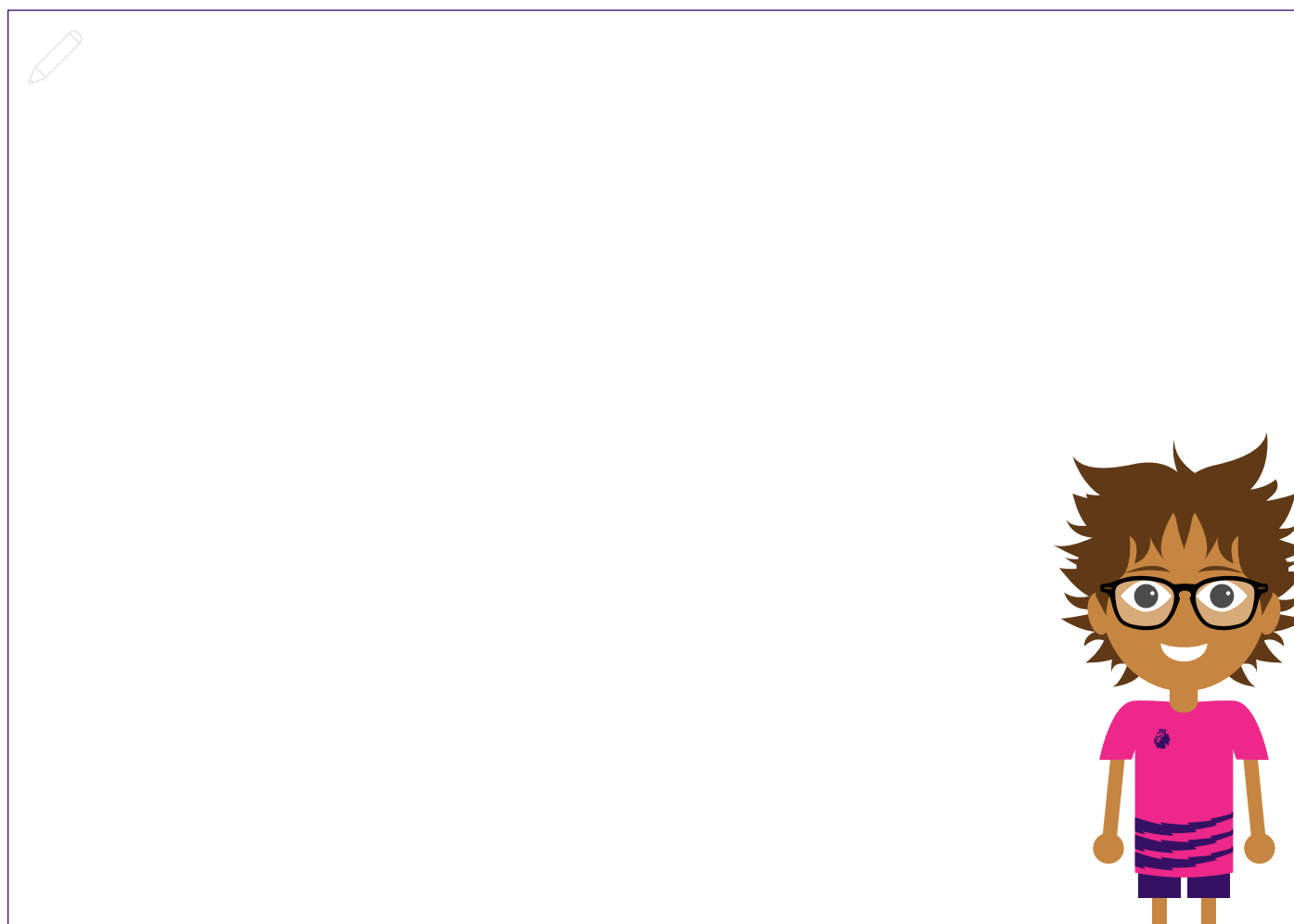


3



4

Which websites were the most reliable? Why do you think they are more reliable than others?



Activity sheet
True or false? Answers

Statement	True or false?	Source	If false, what is the correct fact?
The first Premier League goal was scored by Brian Deane in 1992.	True	Sky Sport - Brian Dean: The story of the first Premier League goal	
Between 1992, when the Premier League formed and 2020, 5 clubs have always been in the League: Arsenal, Chelsea, Everton, Liverpool and Manchester United.	False	Premier League website	It is six – Tottenham Hotspur is the sixth.
The Premier League logo features a tiger with a crown on.	False	Premier League website	Features a lion with a crown on.
The highest attendance in a single Premier League game was 83,222 in 2018 (Arsenal v Tottenham Hotspur).	True	tottenhamhotspur.com	
The Premier League trophy weighs 35 kg in total.	False	Premier League website	False info at goal.com It is actually 25.4kg. premierleague.com